

Kati Smith Interior Design Portfolio

katismith.com | katismithj@gmail.com

pages 3 – 12 **Immaculate Conception Church**
Ithaca, New York

pages 13 – 23 **Wadsworth Library**
Geneseo, New York

Immaculate Conception Church

113 North Geneva St. Ithaca, New York

Project Architect: Jennifer Ahrens, Bero Architecture.

My role: Interior Designer.

Duties included finish, fixture and hardware selection, development of construction documents: specification writing (sections 6, 8–10, & 12), creation of interior architectural plans, elevations and details, construction administration and close supervision of external trades.

The rehabilitation of the Sanctuary and ancillary liturgical spaces for this Roman Catholic Church in Ithaca, New York. In-depth research and close dialogue with the Diocese aid in adapting the historic church interiors to a pre-Vatican II aesthetic as well as performing functional upgrades.



Built in 1898 as “Immaculate Conception of the Blessed Virgin Mary”, it remains Ithaca’s only Roman Catholic Church with a large and dedicated congregation. Much of the building has been lovingly maintained or repaired, however like many of the churches in the area, the interiors were greatly effected by the Vatican II transition in the 1960s. This change was worldwide, resulting in many church interiors becoming much less embellished, colorful or dynamic in texture and aesthetic. The Sanctuary also had many modern adjustments such as pew and lighting replacement as well as a High Altar change to a simple platform and Reredos.

Confessional Design

An accessibility and circulation study was performed resulting in the need to relocate the modern 1990s confessional structures, currently in the Transepts, to the rear of the Sanctuary under the choir loft. Design precedents of the time, as well as archival photographs of the church, uncovered the original confessional designs that were replicated for the new construction.



Original confessional construction



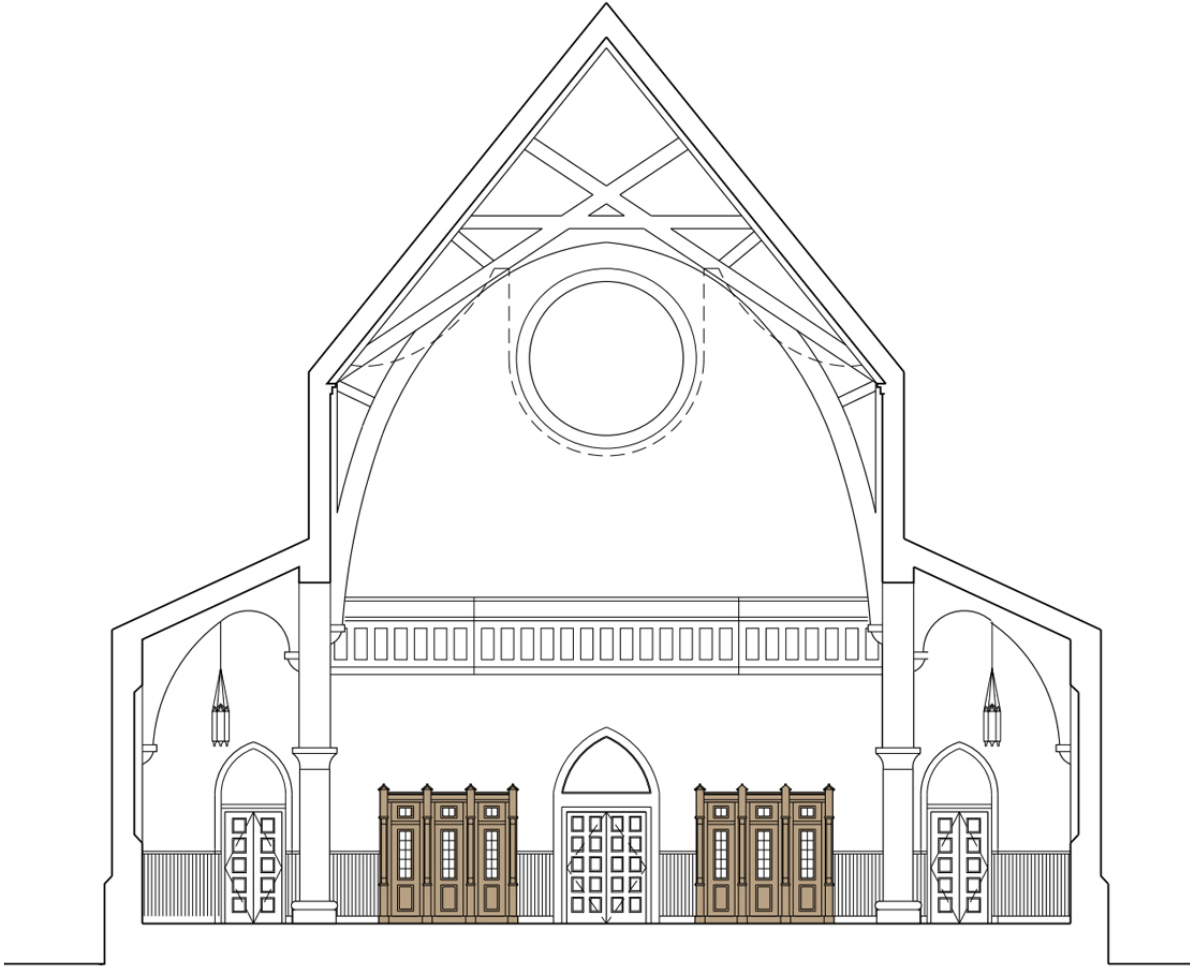
Enlarged confessional

Confessional Design

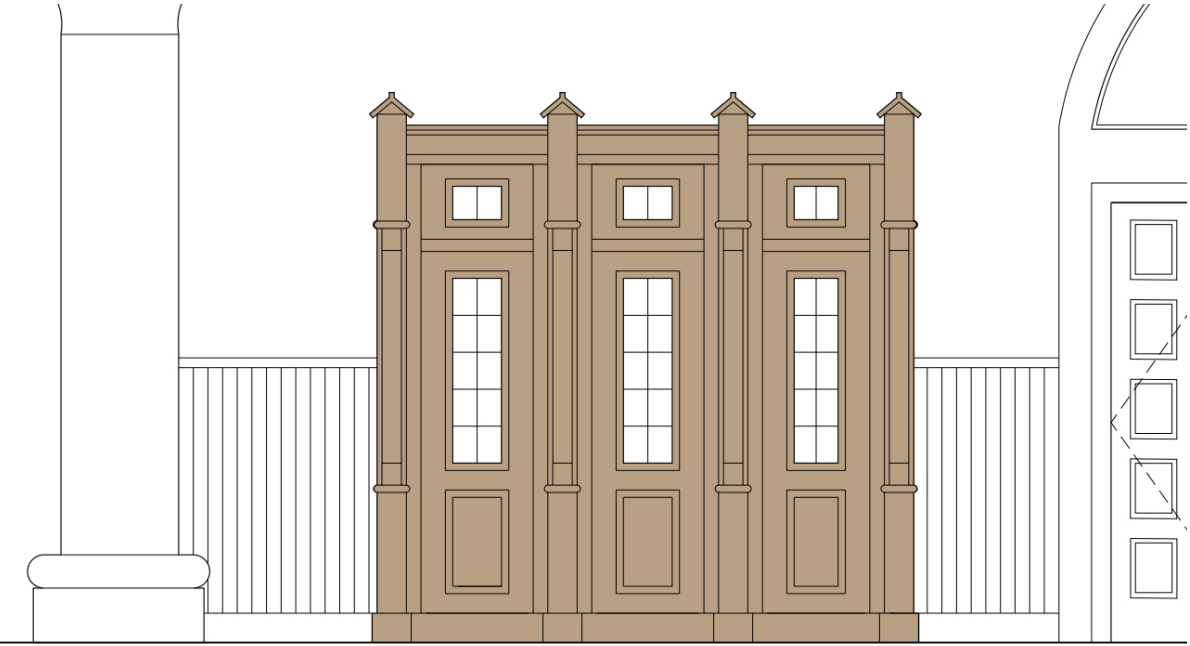
Although the exterior of the church is more in line with a traditional Romanesque style, the original interior architectural elements feature heavily Gothic ornamentation. The new confessionals are a carpentry item to tie into the existing woodwork of the church and to feature the Gothic detailing. The interior is an accessible layout with tinted leaded glass windows.



Existing rear Nave



Proposed Rear Nave elevation



Enlarged confessional design

Confessional Design



Completed confessional construction



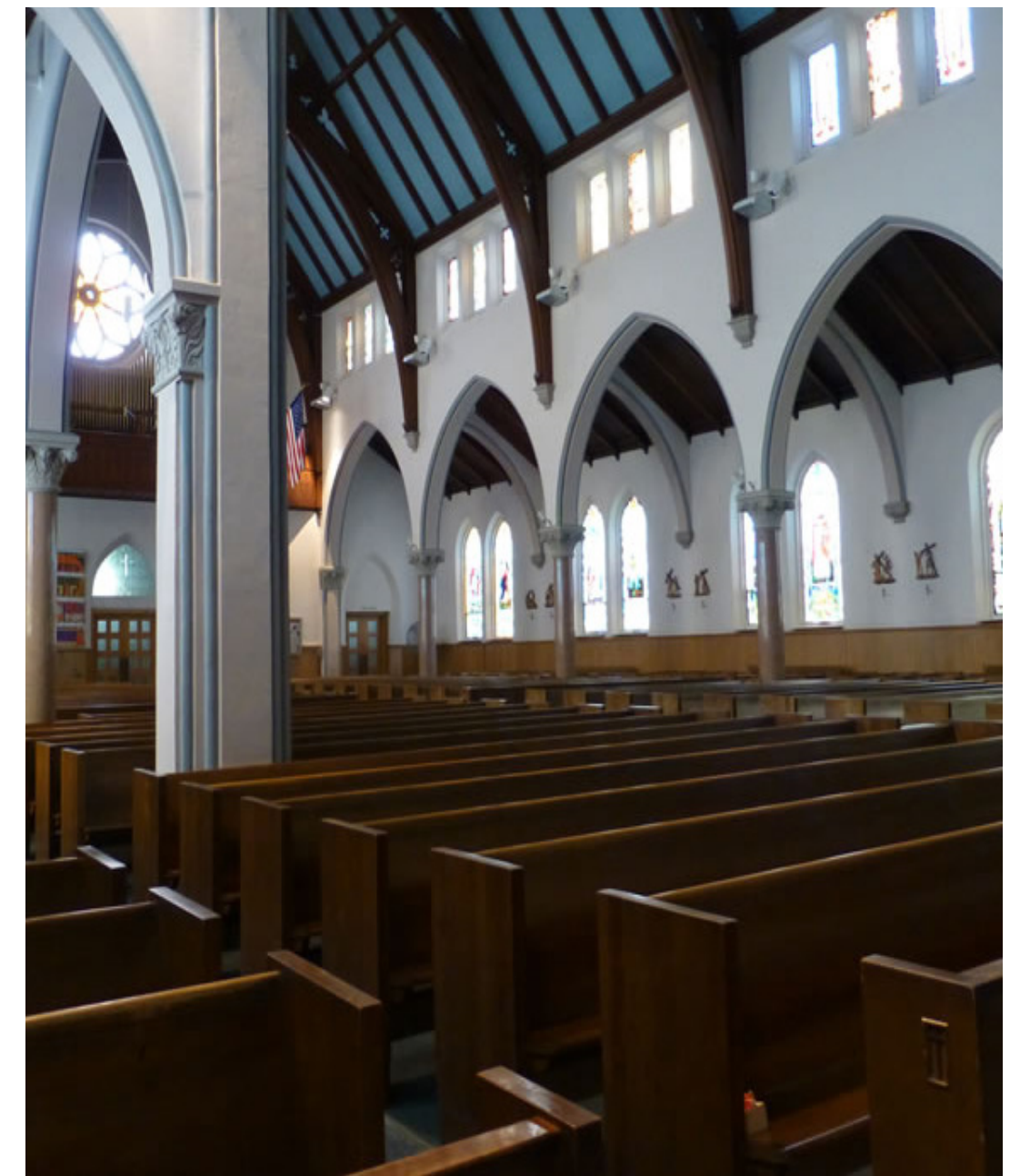
Completed confessional construction

Pew Design

An crucial element to the rehabilitation is the pew replacement. The current pews were installed in the 1960s and are heavily damaged by road salt and general wear, not to mention they are an inappropriate modern style for the space.



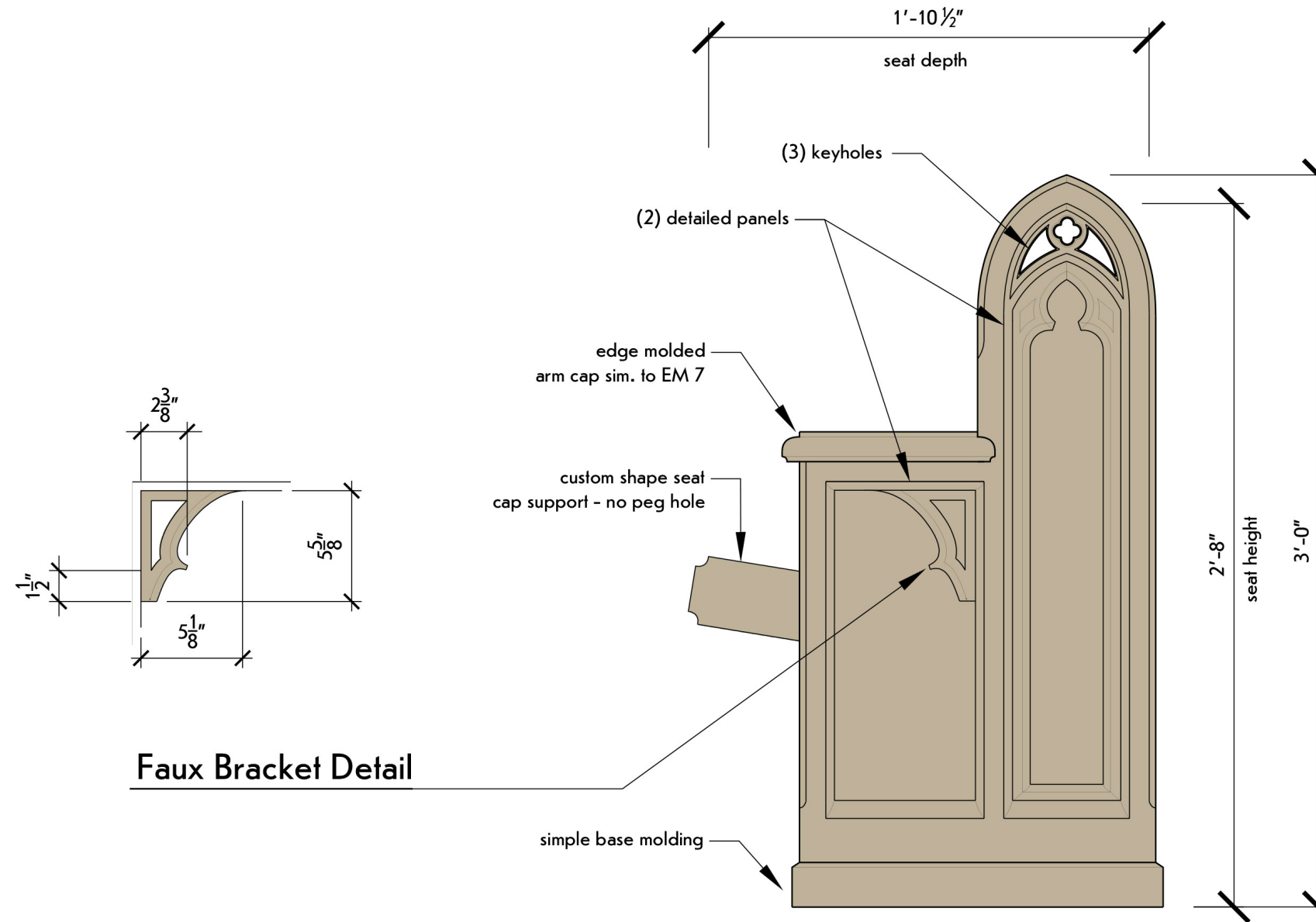
Existing modern pews



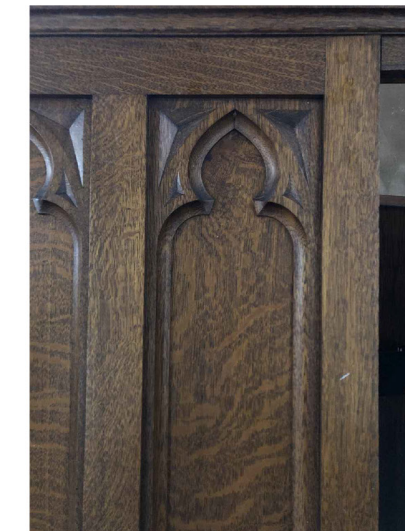
Existing modern pews

Pew Design

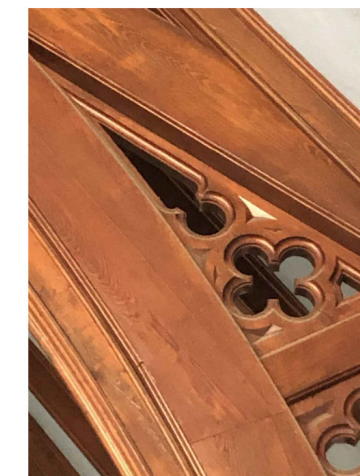
It was important to the church that the new pews be a custom and unique design, using architectural elements found in the rest of the Sanctuary and Nave. The custom pew ends feature Lancet Arches and Quatrefoils that are integral to the design of trusses and other original carpentry items like the organ screen.



Proposed pew detail, NTS



Lancet Arch basis of design:
existing Choir Loft organ encasement detail



Quatrefoil basis of design:
existing wood truss detail

Confessional Design



Completed pew installation



Completed pew installation

Altar, finish, and lighting upgrades

An incredible transformation was achieved due to extremely detailed paint and stenciling on all plaster surfaces, finish upgrades and lighting replacement. All fixtures were removed and a fully new lighting system was installed to include soft Nave lighting, architectural flush lighting, and High Altar spotlights.



Sanctuary view, before



Sanctuary view, after

Altar, finish, and lighting upgrades



Side aisle view, before



Side aisle view, after

Wadsworth Library

24 Center Street, Geneseo, New York

Interior Rehabilitation, completed 2021.

Project Architect: Lindsay Yoder, Bero Architecture.

My role: Interior Designer.

Duties included finish, fixture and hardware selection, development of construction documents: specification writing (sections 6, 8–10, & 12), creation of interior plans, elevations and details, creation of 3D renderings, and construction administration.

The comprehensive renovation of a rear 1990s addition to the historic 19th century public library in Geneseo, New York. A creation of a second floor children's library and appropriate rehabilitation of the circulation and administration areas.



Built in 1867, the building has always functioned as Geneseo's public library. The original portion of the library is comprised of the first level primary library stacks with expansive ceiling heights and a mezzanine above the entry. However, an administration wing was added to the rear of the building in 1997, still only one level, but with the intent to add a second floor in future renovations. The library is included in the Geneseo Historic District, a National Landmark Village listed by the National Register of Historic Places in 1991.

First Level Renovation

The first level of the addition is directly to the rear of the original library, with an open 3-bay connection. The programming remained similar to its previous function, with the circulation desk as the primary use and admiration offices behind. However, in lieu of a children's area that now resides on the second level, a computer zone, meeting space and a teen room were created.

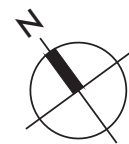
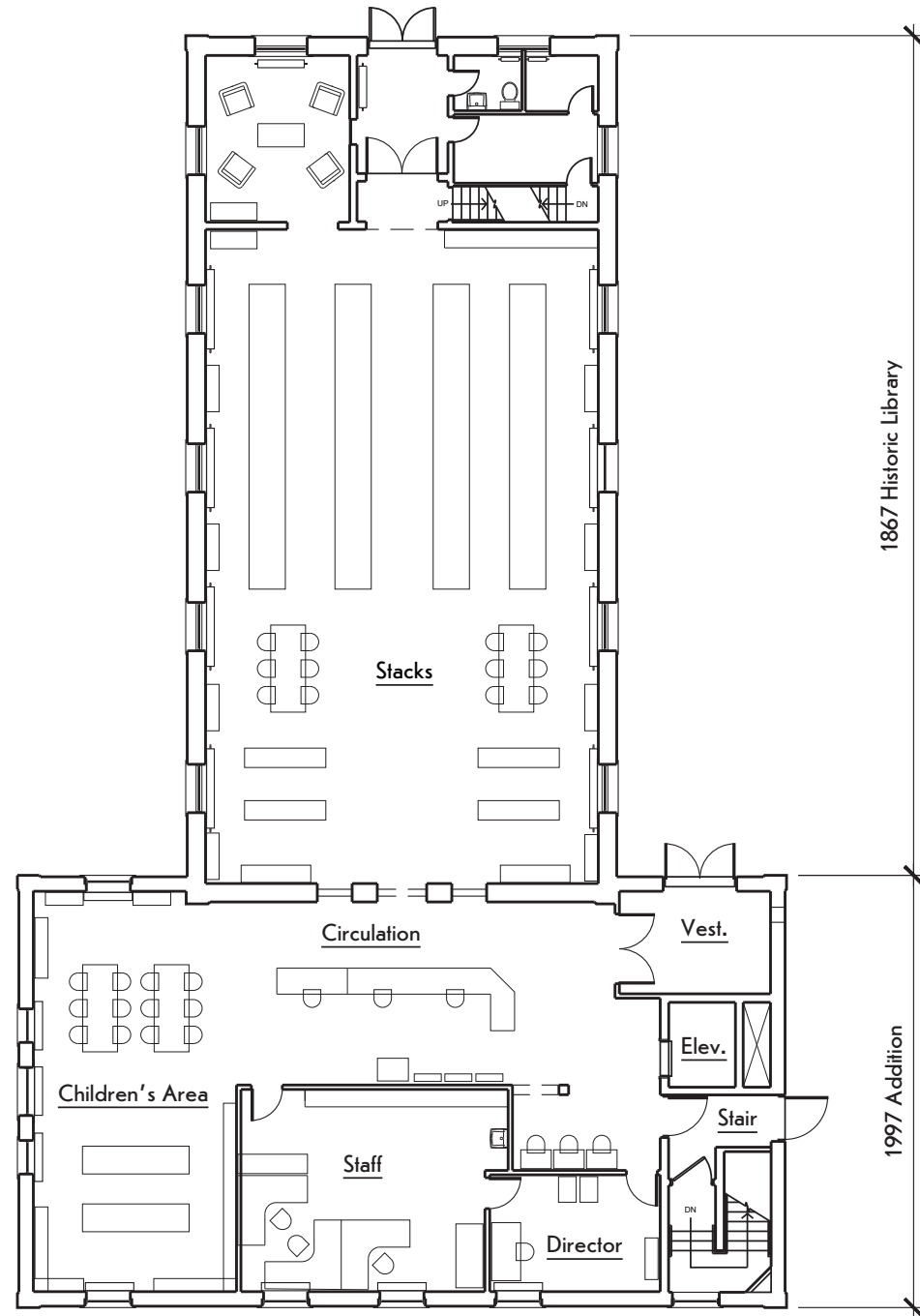


Existing circulation room view

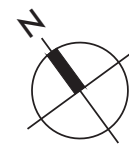
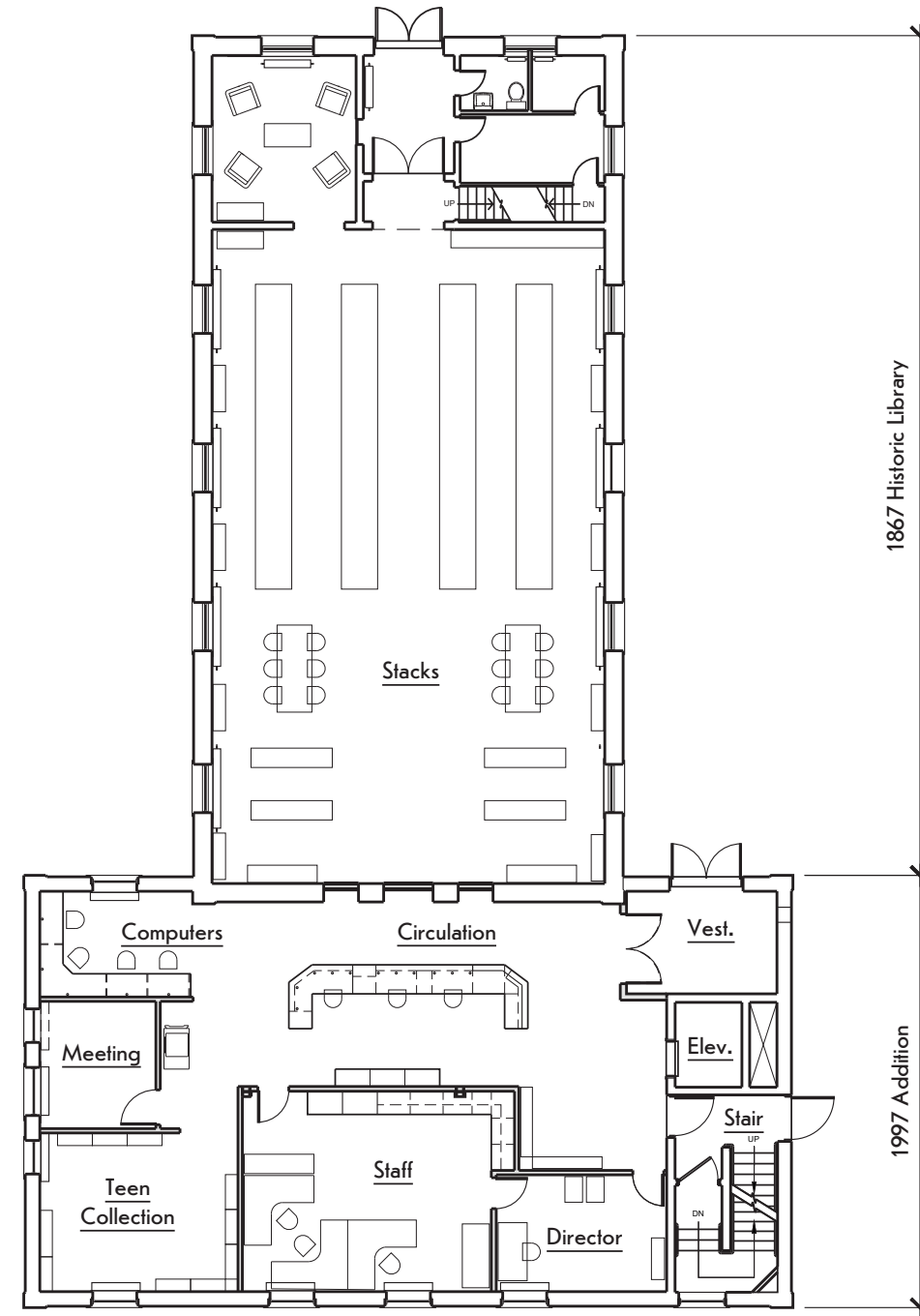


Existing circulation room view

First Level Renovation

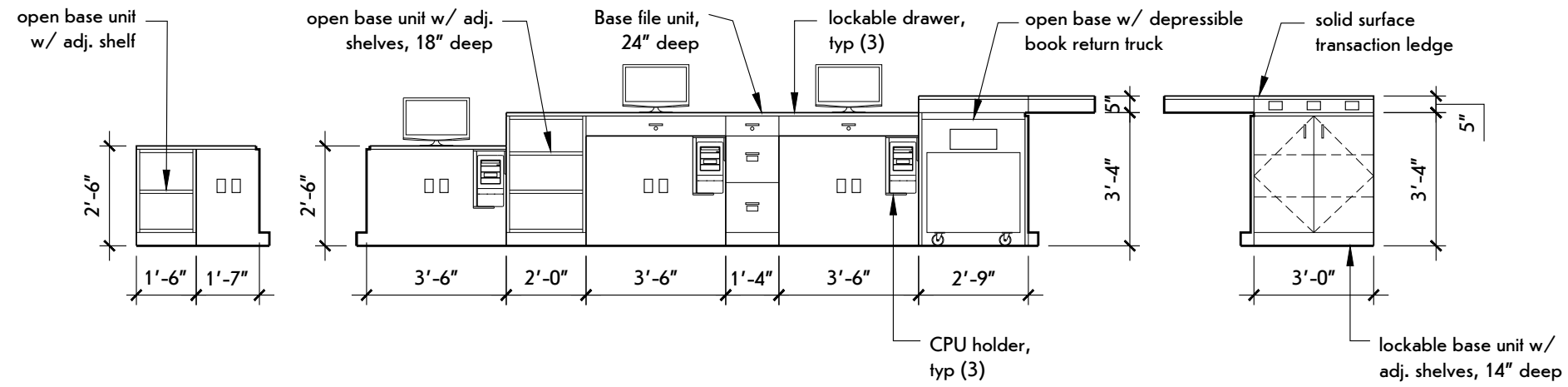


1 First Level - Existing Floor Plan
SCALE: 1/16 = 1'-0"

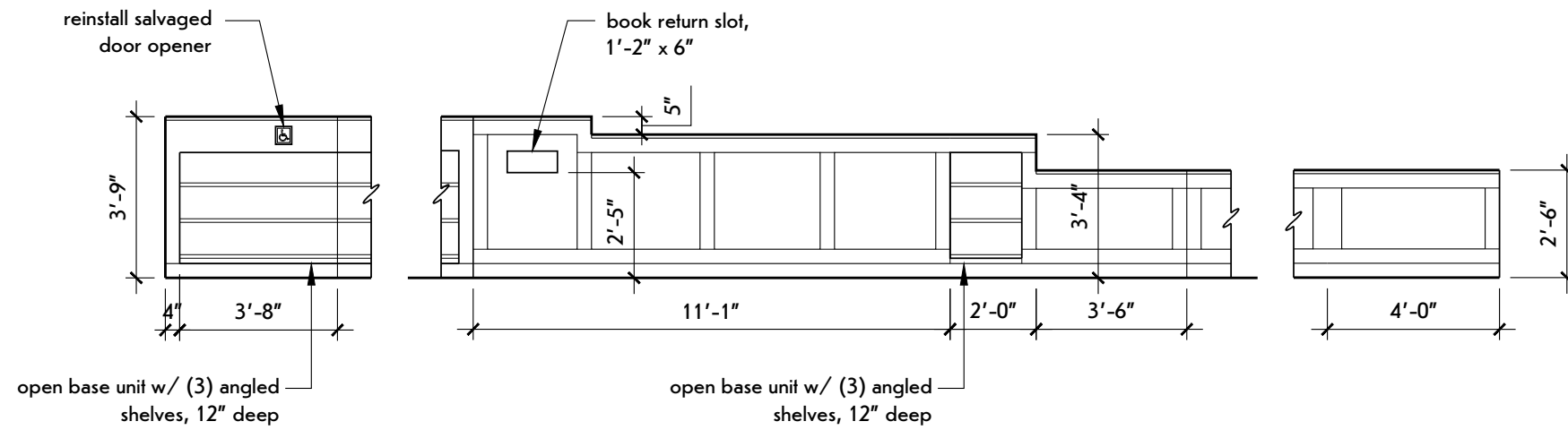


2 First Level - Revised Floor Plan
SCALE: 1/16 = 1'-0"

First Level Renovation



1 Staff Side Circulation Desk Elevation
SCALE: 1/4" = 1'-0"



2 Public Side Circulation Desk Elevation
SCALE: 1/4" = 1'-0"

First Level Renovation

A big challenge in adapting the addition to include a second floor was, of course, preparing for the drastic change in ceiling height for the first level where both staff and visitors have been used to the two-story ceiling height for 2 decades. Creative solutions such as a coffered ceiling and cove lighting were utilized in the ceiling treatment over the circulation desk.

The circulation desk itself was a custom design based on both staff and visitor needs. A simple trim profile and complimentary wood stain make the piece look cohesive with the adjacent historic library.

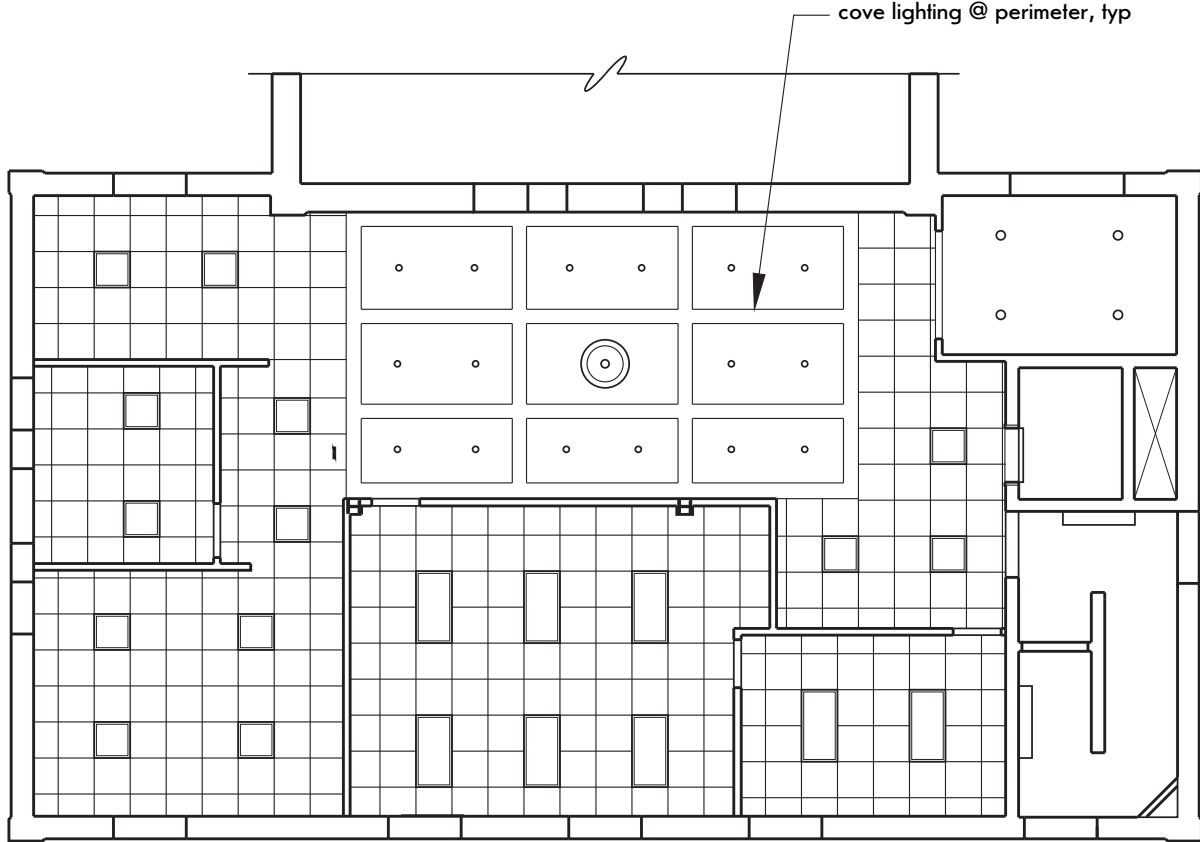


Completed circulation area

First Level Renovation



Circulation area in progress



1

First Level
Reflected Ceiling Plan
SCALE: 3/32 = 1'-0"

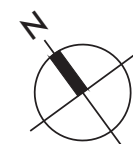
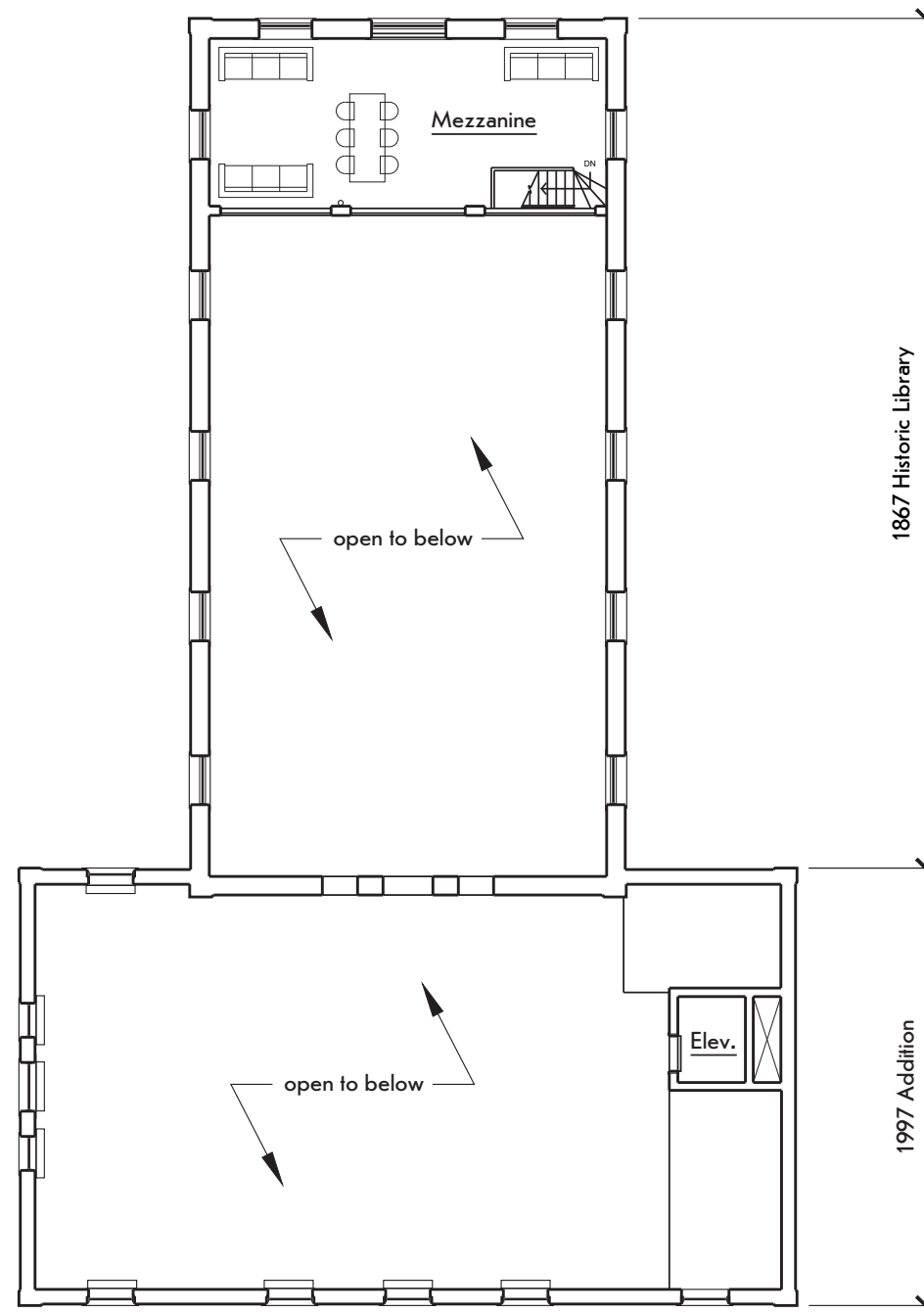
Creation of Second Floor

The children's program for the Wadsworth Library is ever-expanding and a separate, larger children's library was sorely needed for years. The second level of the addition is mostly comprised of the children's stacks and large activity space but also has an office for the Children's Librarian and a more private Programming Room for smaller activities and readings. This floor also has its own circulation desk and toilet rooms.



Children's library in progress

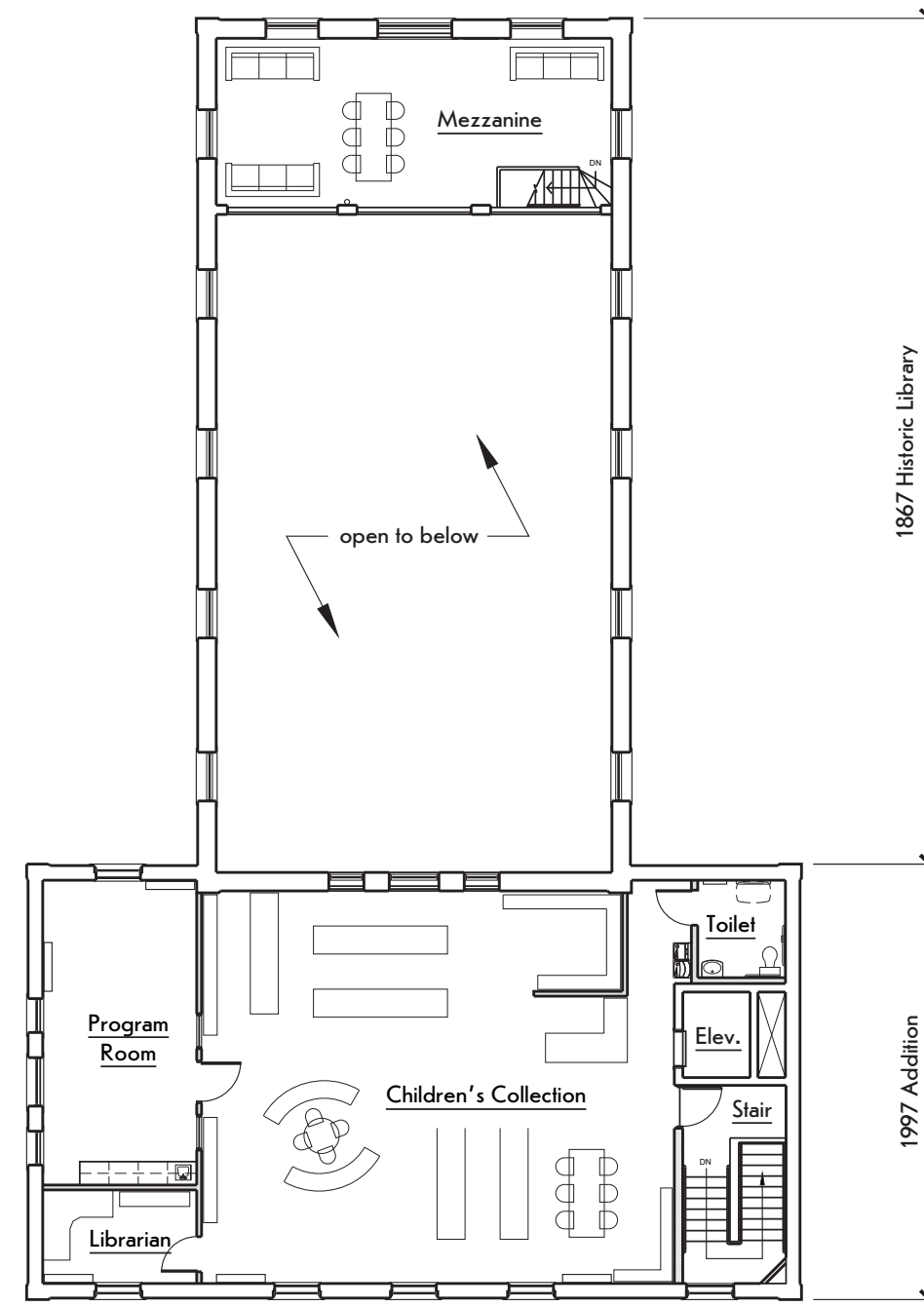
Creation of Second Floor



1

Second Level - Existing Floor Plan

SCALE: 1/16 = 1'-0"



2

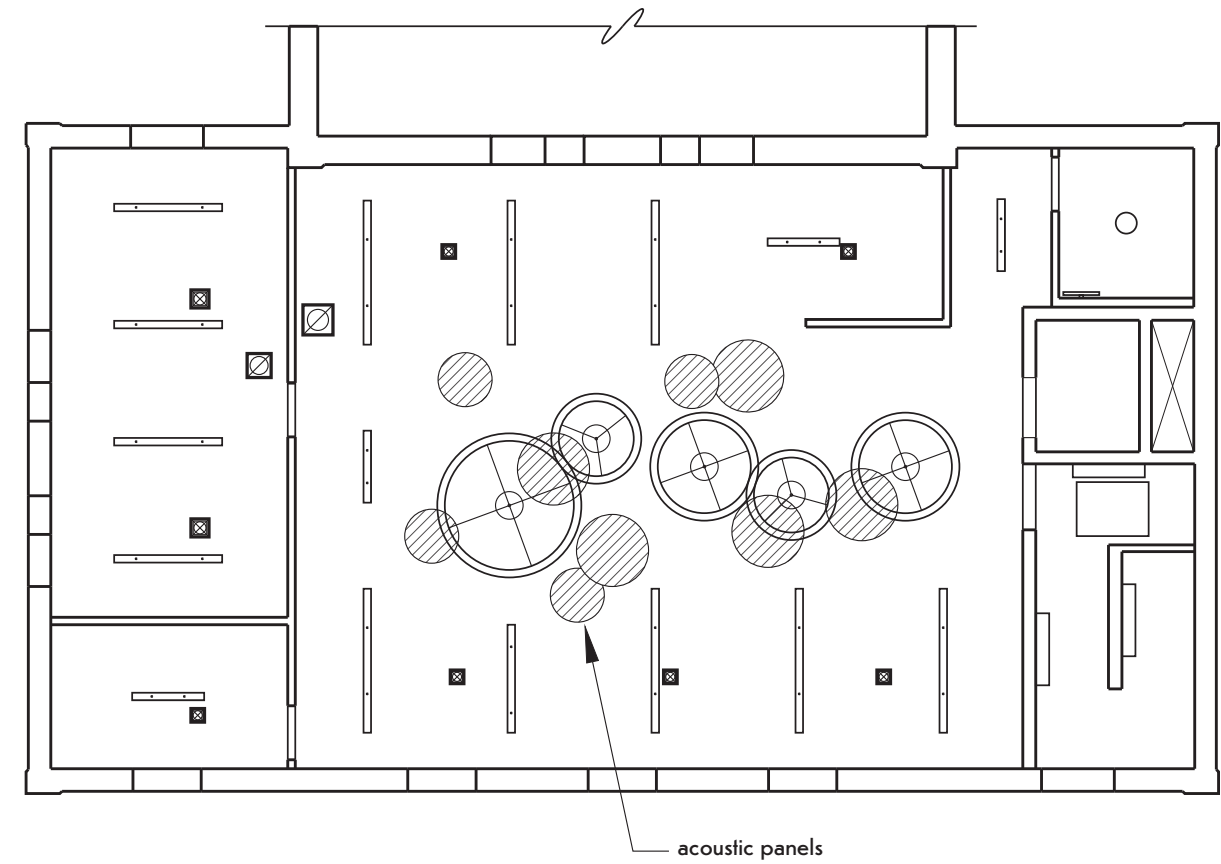
Second Level - Revised Floor Plan

SCALE: 1/16 = 1'-0"

Creation of Second Floor



Children's library in progress



1

Second Floor - Reflected Ceiling Plan

SCALE: 3/32 = 1'-0"

Creation of Second Floor

This room has a spectacular view down into the historic library through the original exterior windows. The interior finishes were adapted to be stimulating to the visitors of the space while also harkening back to the period elements of the building with arched casing, replicated trim profiles, and maintaining the exterior brick façade finish.



Completed children's library



Completed children's library